

# Getting Started with the PRA

## The Perinatal Risk Assessment form (PRA)

is an efficient way to collect a complete medical history for your prenatal patients.

The form streamlines front office procedures and ensures that patients get the referrals they need – **fast**.

### Reduces New Patient Paperwork

*The PRA makes it easier to get paid and process referrals.*

Required to authorize your payment from NJ Medicaid Managed Care Organizations (MMCOs).

One form to fill out – It's the only form you need for MMCOs.

Replaces MMCO health screen forms (such as GEMS) and is the easiest way to obtain authorization numbers.

Automates referrals for you to connect your patients with home-visiting and other community based services.

Can be completed online or on paper – however it works for you (and your patient).



**Takes only 5 minutes  
to complete.**



### Get a Complete Picture of Patients' Needs

Specially designed questions to get the most truthful answers about high-risk behaviors.

Tracks all your patients and reveals trends in high-risk behaviors and other risks.

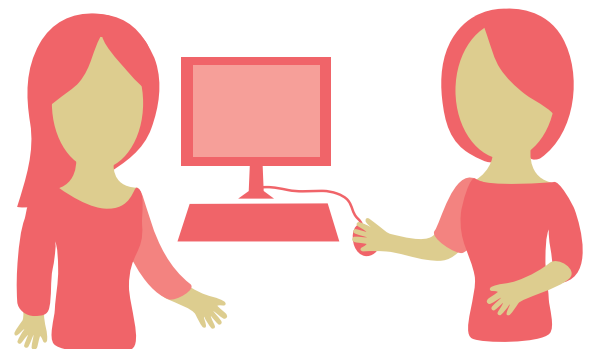
Easily connects your patients to services that improve outcomes for both mom and baby.

### We Make it Easy to Use

*We know that administrative changes can be disruptive. Our training and support services make the switch go smoothly.*

Complete support for you as you switch. Family Health Initiatives (FHI) provides hands-on training for you and your staff to make it easy to set up and start using.

Ongoing assistance is always available. We are here to answer your questions by email, phone and web-chat.



### Family Health Initiatives

2500 McClellan Avenue, Suite 270  
Pennsauken, NJ 08109  
856-665-6000 | [praspect.org](http://praspect.org)

**To get started,  
contact FHI today at  
[pra@snjpc.org](mailto:pra@snjpc.org)**